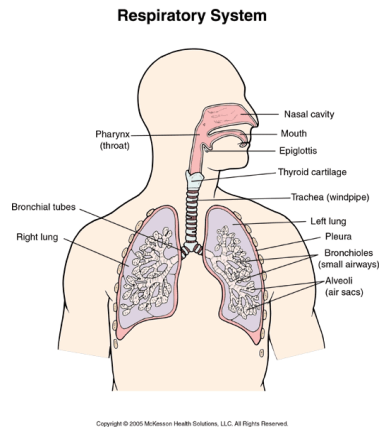
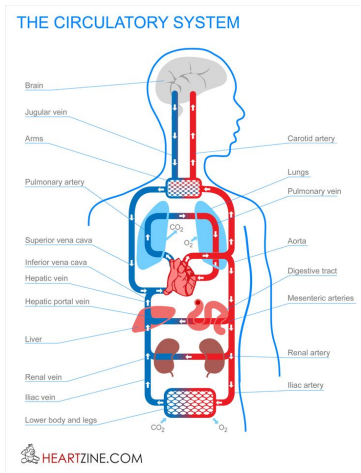


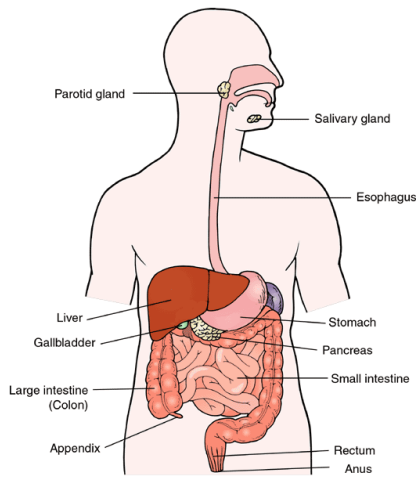
The Organ Systems:

Lesson 4-Organ Systems, Stimuli, and Alternative Medicine

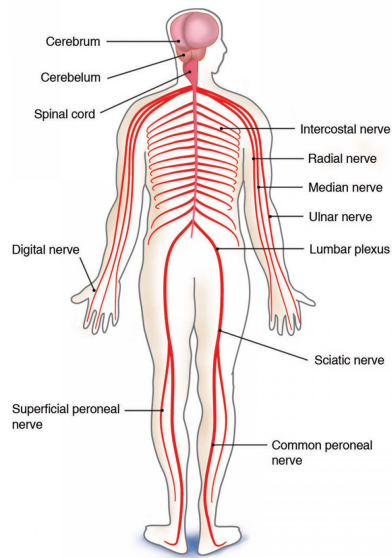
The Organ Systems:



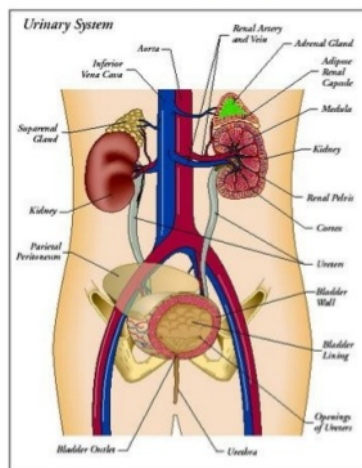
Digestive System



The Nervous System



Excretory System



- Consists of 2 kidneys, 2 ureters, urinary bladder and urethra
- Essential in the removal of wastes from the body

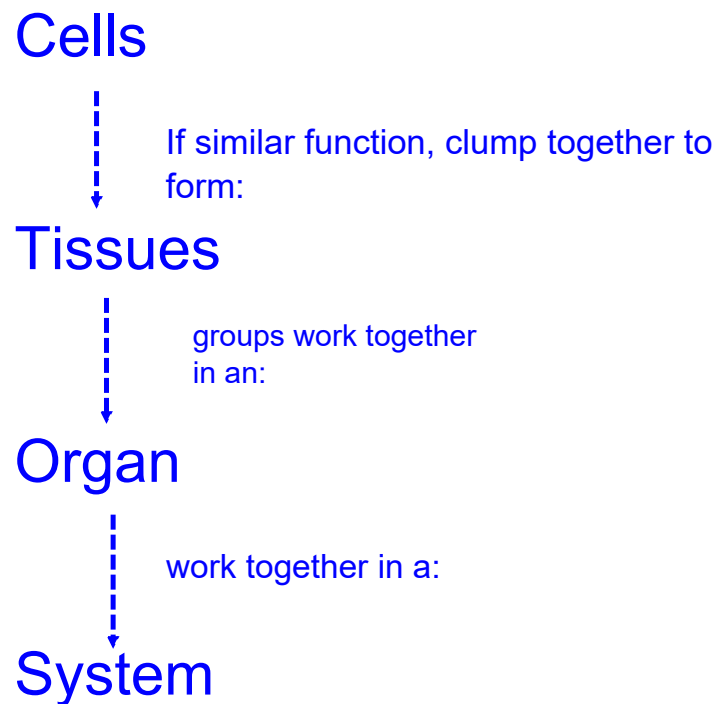


What is the relationship between the following words?

Cells Tissues Organs Systems

What is the relationship between the following words?

Cells Tissues Organs Systems



When you eat something, what organ systems are involved?

When you eat something, what organ systems are involved?

- muscular (throat muscles in swallowing)
- digestive system
- circulatory system (when food is digested the nutrients are sent through the blood stream)
- excretory system

Lesson 4-Organ Systems, Stimuli, and Alternative Medicine

Name two organs you think belong to each of the following systems.

Circulatory:

Respiratory:

Nervous:

Excretory:

Digestive:

Lesson 4-Organ Systems, Stimuli, and Alternative Medicine

Let's go through the handout to find out if we're right!

The Circulatory System-coloring sheet!

Why are arteries colored red and veins colored blue?

Because the body is so coordinated and the organs are interdependent (they all depend on each other) what happens if just one organ is damaged?

What do we do in this case?

Because the body is so coordinated and the organs are interdependent (they all depend on each other) what happens if just one organ is damaged?

What do we do in this case?

How do you feel about someone else's organs being in your body?

Sometimes, the reason you need a transplant is because your cells have becoming unhealthy. What factors could affect the health of your cells?

Sometimes, the reason you need a transplant is because your cells have become unhealthy. **What factors could affect the health of your cells?**

- inherited diseases or conditions
- bacteria/viruses that cause infection
- sensitivity to environmental conditions (allergies to dust)
- how you respond to stress
- how you treat your body (smoking, sleep)

What do you think a stimulus is? (stimuli for plural)

What do you think a stimulus is? (stimuli for plural)

If you sit in a dark room and then go outside where it's sunny, what do you do?

What do you think a stimulus is? (stimuli for plural)

If you sit in a dark room and then go outside where it's sunny, what do you do?

You squint because the change in light acts as a stimulus. Your pupils react to the change in light by shrinking.

A **stimulus** is a change in environment that triggers a reaction or response. The response may be physical or behavioral.

Ex: your pupil shrinking due to change in light is physical. You shading your eyes with your hands is behavioral.

Temperature change is another stimulus that can cause physical and behavioral responses.

Physical: in the summer, you may notice your face gets red in the heat. This is your blood vessels expanding in the summer to release excess heat.

In the winter, your face may be more pale. This is your blood vessels contracting to keep in heat.

What behavioral response could you have to a change in temperature?

Not all stimuli affect your body in the same way. Some cause extreme physical, behavioral, and emotional reactions and can be harmful to your health.

Can you think of any examples?

Lesson 4-Organ Systems, Stimuli, and Alternative Medicine

Not all stimuli affect your body in the same way. Some cause extreme physical, behavioral, and emotional reactions and can be harmful to your health.

Can you think of any examples?

Alcohol

Physical: alcohol slows down brain activity and normal body functions. It can be addictive and can lead to memory loss, enlargement of the heart, heart attack, or stroke.

Behavioral: alcohol may make some people feel more sociable. It can also affect their emotions and rob the drinker of self-control.

Cigarettes:

Physical: every time a smoker inhales cigarette smoke, more than 4000 substances enter their body. **Nicotine raises blood pressure and releases adrenalin.** It also stimulates the part of the brain that controls pleasure, causing a physical reaction that makes the smoker feel good for a short while. The behavioral response due to this is to light another cigarette.

The tars in cigarette smoke are also a stimuli, causing cell damage, abnormal growth of cells and damage to lungs.

Drugs: certain drugs affect the cells in your body and cause an immediate physical response. Smoking marijuana causes rapid heartbeat, bloodshot eyes, and dry mouth and throat. When people use drugs, their behavior is also affected.

Traditional Medicine:

What is it?

Traditional Medicine:

What is it?

Medical knowledge gained over time and passed down from generation to generation. Traditional healers believe that our mind, body, spirit, and emotions are interconnected.

Plants are very important in the traditional medicine of First Nations and Metis peoples and are used to treat many different illnesses.

Alternative medicine

What is it?

Alternative medicine

What is it?

Also believe that healing involves treating the whole person and that the body, mind, emotions, and spirit all affect our health.

Also believe natural medicines are preferable to manufactured ones.

Ex: acupuncture and naturopathic medicine



How are traditional medicine and alternative medicine different from the medicine doctors practice in hospitals today?



Lesson 4-Organ Systems, Stimuli, and Alternative Medicine

Get ready for a quiz!